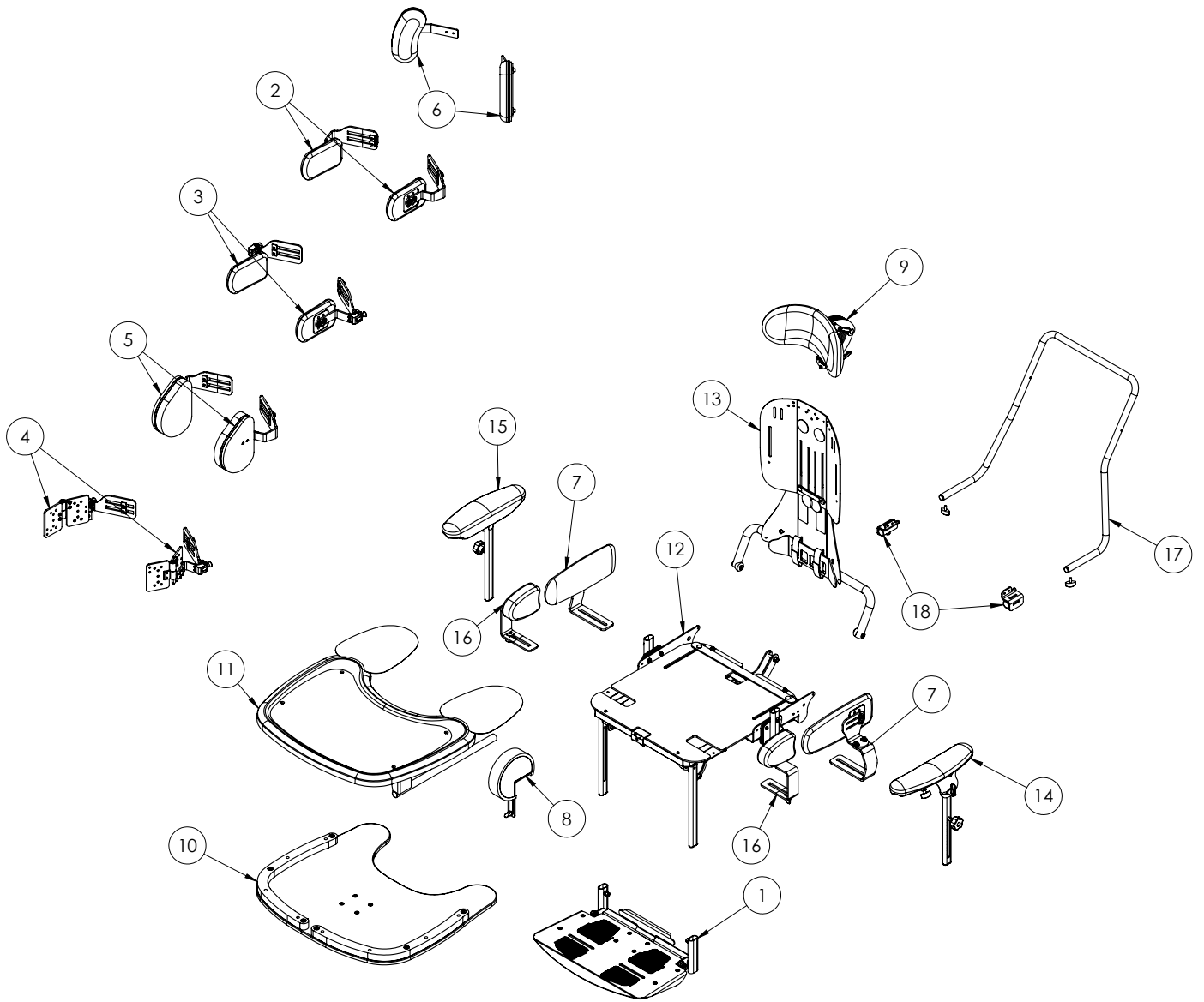


## Seat Assembly (Size 3)



## Seat Assembly (Size 3)

Pos.	Leckey Code	Description	Qty	Compatible with	
				Size 1	Size 2
1	151-3745	Size 3 One piece footplate - metal (Black)	1	✓	✓
1	151-6327	Size 3 One piece footplate - metal (White)	1	✓	✓
1	151-3746	Size 3 one piece footplate - wooden	1	✓	✓
1	151-6329	Size 3 one piece footplate - wooden(White)	1	✓	✓
2	151-6306-XX	Size 3 Rigid PU chest laterals pair (cover included) (Black)	1	✓	✓
2	151-6307-XX	Size 3 Rigid PU chest laterals pair (cover included)(White)	1	✓	✓
2	151-6306-XXVIN	Size 3 Rigid PU chest laterals pair (cover included) (Black)	1	✓	✓
2	151-6307-XXVIN	Size 3 Rigid PU chest laterals pair (cover included)(White)	1	✓	✓
2	151-8308-XX	S3 Rigid/Flipaway chest lateral cover (pair)	1	✓	✓
2	151-8308-XXVIN	S3 Rigid/Flipaway chest lateral cover (pair)	1	✓	
3	151-6308-XX	Size 3 flip away PU chest laterals pair (cover included) (Black)	1	✓	✓
3	151-6309-XX	Size 3 flip away PU chest laterals pair (cover included)(White)	1	✓	
3	151-6308-XXVIN	Size 3 flip away PU chest laterals pair (cover included) (Black)	1	✓	✓
3	151-6309-XXVIN	Size 3 flip away PU chest laterals pair (cover included)(White)	1	✓	
3	151-8308-XX	S3 Rigid/Flipaway chest lateral cover (pair)	1	✓	
3	151-8308-XXVIN	S3 Rigid/Flipaway chest lateral cover (pair)	1	✓	✓
4	151-3757	Size 3 complex flipaway laterals pair (Horizontal) (Black)	1	✓	✓
4	151-6311	Size 3 complex flipaway laterals pair (Horizontal)(White)	1	✓	
5	151-6312-XX	Size 3 basic chest laterals pair (Cover included) (Black)	1	✓	
5	151-6313-XX	Size 3 basic chest laterals pair (Cover included)(White)	1	✓	
5	151-6312-XXVIN	Size 3 basic chest laterals pair (Cover included) (Black)	1	✓	
5	151-6313-XXVIN	Size 3 basic chest laterals pair (Cover included)(White)	1	✓	✓
5	151-8315-XX	S3 basic chest lateral cover (pair)			✓
5	151-8315-XXVIN	S3 basic chest lateral cover (pair)	1	✓	✓
6	151-6314-XX	Size 3 Protraction Pad pair (cover included) (Black)	1	✓	✓
6	151-6315-XX	Size 3 Protraction Pad pair (cover included)(White)	1	✓	
6	151-6314-XXVIN	Size 3 Protraction Pad pair (cover included) (Black)	1	✓	
6	151-6315-XXVIN	Size 3 Protraction Pad pair (cover included)(White)	1	✓	✓
7	151-3754	Size 3 Side pads (Pair - hardware only) (Black)	1	✓	✓
7	151-6316	Size 3 Side pads (Pair - hardware only)(White)	1	✓	✓
7	151-6316-XX	Size 3 Side pads cover (pair)	1	✓	✓
7	151-6316-XXVIN	Size 3 Side pads cover (pair)	1	✓	✓
8	151-6322-XX	Size 3 Pommel (Cover included) (Black)	1	✓	✓
8	151-6323-XX	Size 3 Pommel (Cover included)(White)	1	✓	
8	151-6322-XXVIN	Size 3 Pommel (Cover included)(Black)	1	✓	✓
8	151-6323-XXVIN	Size 3 Pommel (Cover included)(White)	1	✓	
9	151-3751-05	S3 Contoured headrest hardware and cover (Black)	1	✓	✓

## Seat Assembly (Size 3)

Pos.	Leckey Code	Description	Qty	Compatible with	
				Size 1	Size 2
10	151-6326	Size 3 Tray Wooden Flipaway	1	✓	✓
11	151-3766	Size 3 Tray Plastic Clear	1	✓	✓
11	151-3767	Size 3 Tray Plastic Black	1	✓	✓
12	151-8324	Seatbase Assembly S3(Black)	1	✓	✓
12	151-8325	Seatbase Assembly S3(White)	1	✓	✓
13	151-8326	Backrest Assembly S3(Black)	1	✓	✓
13	151-8327	Backrest Assembly S3(White)	1	✓	✓
14	151-3800	Size 3 armrest (LH)(Black)	1	✓	✓
14	151-8329	Size 3 armrest (LH)(White)	1	✓	✓
15	151-3801	Size 3 armrest (RH)(Black)	1	✓	
15	151-8331	Size 3 armrest (RH)(White)	1	✓	✓
16	151-6320-XX	Size 3 Abduction Side Pad pair (Black)	1	✓	
16	151-6320-XXVIN	Size 3 Abduction Side Pad pair (Black)	1	✓	✓
16	151-6321-XX	Size 3 Abduction Side Pad pair (White)	1	✓	
16	151-6321-XXVIN	Size 3 Abduction Side Pad pair (White)	1	✓	
17	151-8371	Removable handle bar Assy-Black	1	✓	✓
17	151-8372	Removable handle bar Assy-White	1	✓	✓
18	151-8374	LHS handle bar attachment kit (Black)	1	✓	
18	151-8375	LHS handle bar attachment kit (White)	1	✓	
18	151-8376	RHS handle bar attachment kit (Black)	1	✓	
18	151-8377	RHS handle bar attachment kit (White)	1	✓	