

LECKEY[®]

Kidwalk
Atlas Walker
Nurmi Neo



LECKEY^o

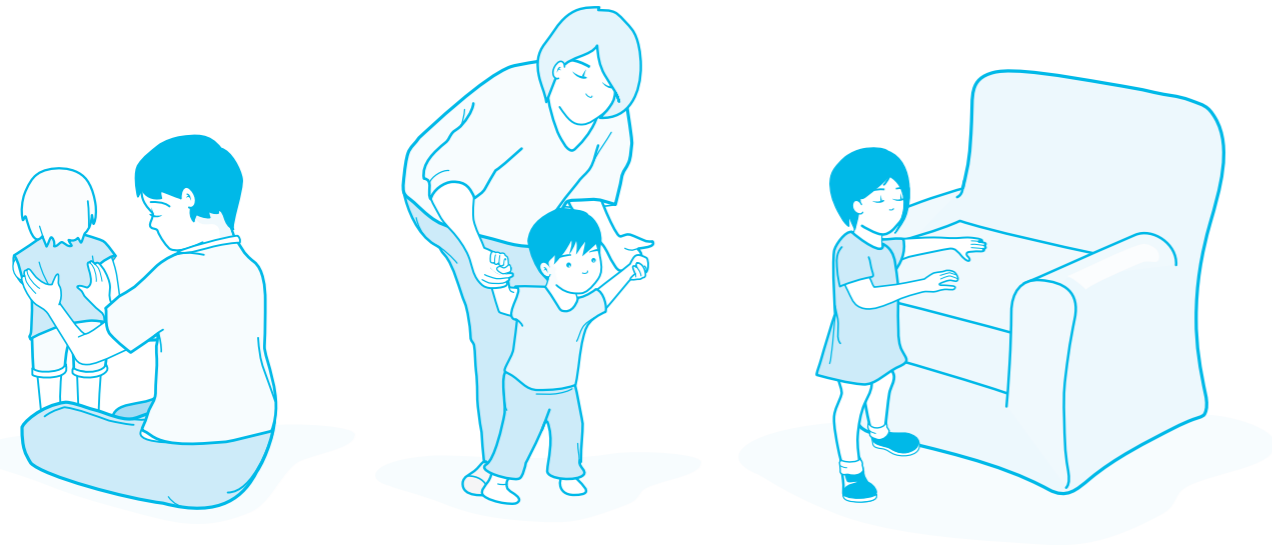
Stronger together.

We work with individuals, therapists and carers to design products with both a clinical and an emotional focus. Using the latest research and clinical understanding, we create practical solutions which are easily integrated into family life, because for us, life is about going, enjoying, participating and doing.

24 hour
postural care for
babies, kids & adults.
Sleeping, Sitting,
Standing, Walking,
Moving, Bathing,
Toileting.



Walking may be one of the most complex activities to master, but it's also one of the most valuable for the physical and emotional development of kids with disabilities.



The process of helping any child to walk alone takes time and effort, but the end result is a taste of independence that helps their development of spatial awareness and encourages a proactive desire to discover what is all around, not just what is in front.

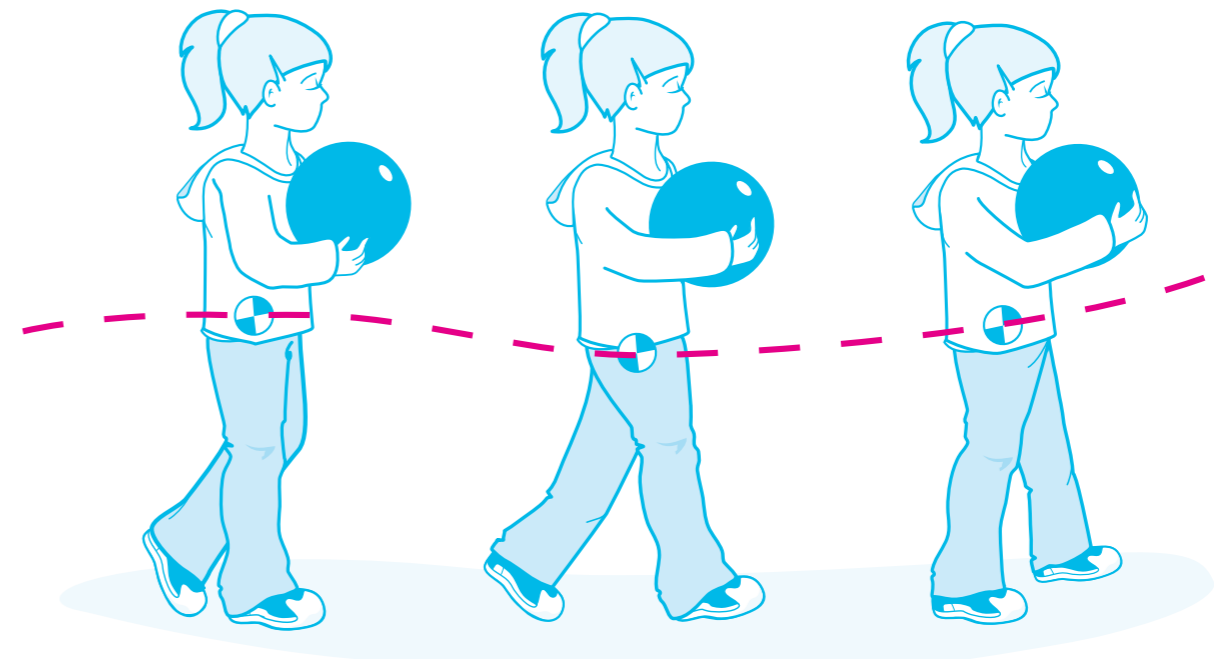
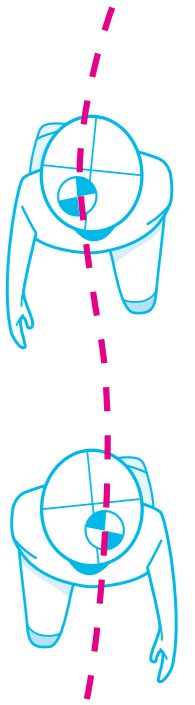
In response to this, Leckey's range of supportive walkers has been developed with both a clinical and an emotional focus.

They have the clinical bioengineering needed to place them at the heart of dedicated therapy programmes, but also the simplicity and durability to encourage their integration into the everyday lives of parents, carers and kids.

Kidwalk, Atlas and Nurmi Neo cater for a wide age range and varying user needs, providing appropriate support and enabling the gradual learning of movement and lower limb function.

The dynamic nature of walking involves two principle actions; the weight shift from left to right during gait movement, and the datum point rise and fall during stride pattern.

Leckey's range of products compensates for these actions in varying degrees; with the Kidwalk's ability to absorb both of these movements, the Atlas which permits unrestricted gait movement, and the Nurmi Neo which provides a simple but effective low level support to kids with mild to moderate conditions.



Products Overview			
Product	Size	Child's Ability	Age Range
Kidwalk	1	Low, Medium, High	1 - 7
	2	Low, Medium, High	5 - 12
Atlas Walker	1	Medium, High	1 - 6
	2	Medium, High	5 - 12
	3	Medium, High	8 - 16
Nurmi Neo	1	High	1 - 4
	2	High	3 - 7
	3	High	5 - 10

Kidwalk

Kidwalk is a postural support device that helps children walk unaided without needing to use their hands for stability. It is the first on the market that is designed to move with the child, giving them the power and the freedom to explore, touch, feel and learn on their own.

Suitable for mild, moderate and complex users with lower limb motor function.

A weight shift mechanism allows work on balance and motor development during therapy and a mid-wheel design encourages rotation of the upper body over the pelvis while turning.

The small turning circle and ability to roll over carpet make it suitable for inside the home as well as the classroom, therapy room and outdoors.



Kidwalk 2012
Stronger,
more durable,
more secure

LARGER SOFT TOUCH KNOBS ALLOW EASY TIGHTENING OF ADJUSTABLE COMPONENTS. ALLEN KEY SCREWS ARE PROVIDED WITH EACH PRODUCT WHICH CAN BE SWAPPED WITH THE **LARGER PLASTIC KNOBS** TO SECURE THE PRODUCT SET-UP

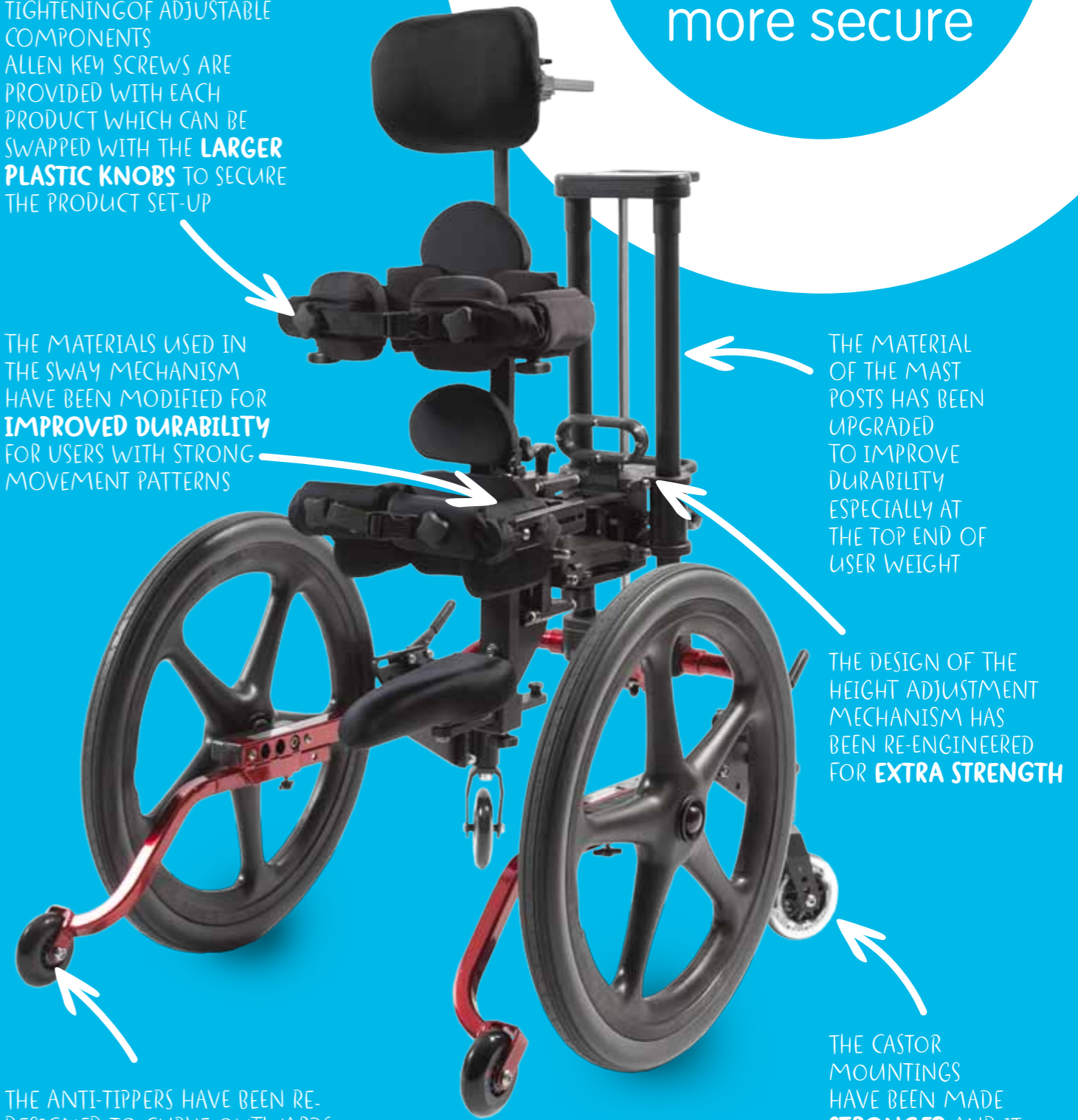
THE MATERIALS USED IN THE SWAY MECHANISM HAVE BEEN MODIFIED FOR **IMPROVED DURABILITY** FOR USERS WITH STRONG MOVEMENT PATTERNS

THE MATERIAL OF THE MAST POSTS HAS BEEN UPGRADED TO IMPROVE DURABILITY ESPECIALLY AT THE TOP END OF USER WEIGHT

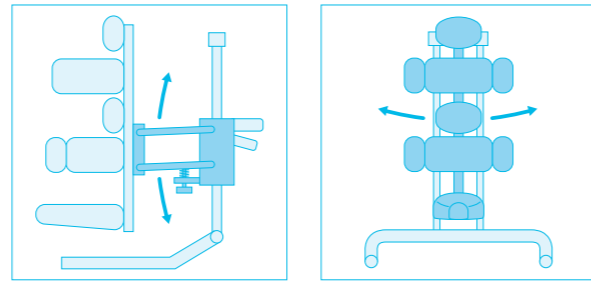
THE DESIGN OF THE HEIGHT ADJUSTMENT MECHANISM HAS BEEN RE-ENGINEERED FOR **EXTRA STRENGTH**

THE ANTI-TIPPERS HAVE BEEN RE-DESIGNED TO CURVE OUTWARDS FOR **GREATER STABILITY**, ESPECIALLY FOR CHILDREN WITH A WIDE GAIT PATTERN

THE CASTOR MOUNTINGS HAVE BEEN MADE **STRONGER** AND IT IS NOW POSSIBLE TO RETROFIT DIRECTIONAL LOCKS

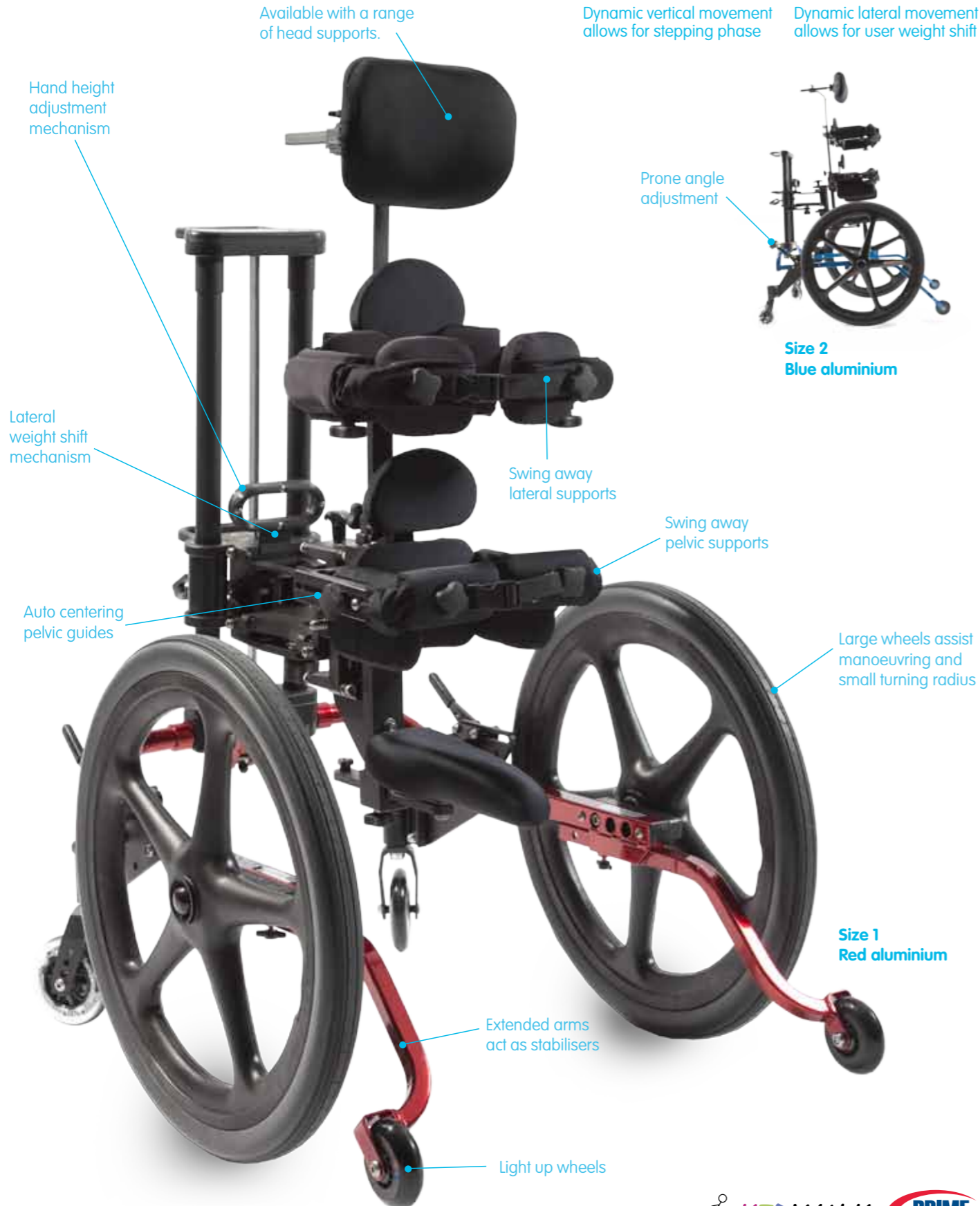


Kidwalk



Dynamic vertical movement allows for stepping phase

Dynamic lateral movement allows for user weight shift



Size 2
Blue aluminium

Size 1
Red aluminium

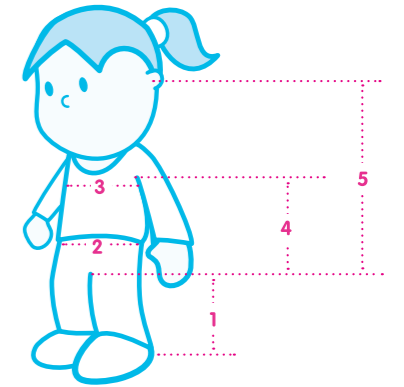
Kidwalk Product Sizing

Size	1		2	
	mm	inches	mm	inches
Age	1 - 7		5 - 12	
Base Width	600	24	688	27.5
Base Height	675	27	800	32
Overall Length	825-875	33-35	900-950	36-38
Mast Height	825	33.5	930	37.25
Wheels	500	20	600	24
Castors	100	4	125	5
Max User Weight	30kg	65lbs	50kg	110lbs
Seat Height - inside leg (1)	225-550	9-22	375-700	15-28
Hip Width (2)	140-235	5.5-9	180-290	7-11.5
Chest Width (3)	165-255	6.5-10	220-370	8.5-14.5
Thoracic Height (4)	245-410	9.6-16	300-560	11.8-22
Headrest Height (5)	350-690	13.8-27	440-790	17.3-31

The Kidwalk is available in two sizes.

The standard product includes: Pelvic support system; swivel seat; quick release wheels (size 1: 20" or size 2: 24"); anti-tip bars.

Kidwalk has been engineered to work in line with the body, making it very easy to use. It actively encourages and motivates kids to explore their environment inside the home, at school, or outside in the garden or playground.



Accessories



Atlas Walker

The Atlas Walker is designed for mild to moderate children from 2 years up to 16 years old and is available in three sizes. The Atlas Walker has an innovative and patented swivel seat feature making it truly unique.



Swivel saddle seat



Frame can be tilted forward



Frame can be height adjusted with user in product



Accessory



Abduction Plate/Pad

The Atlas Walker is available in three sizes.

Suitable for mild to moderate users.

The standard product includes: Frame and directional wheels; swivel saddle and sacral support; pelvic support; flexible trunk support; handle bars; wheels.

Although the Atlas Walker was designed primarily for indoor use it can be used over uneven surfaces outdoors. The castors have a directional lock to help with steering so the user can concentrate on walking and gait development first.

The height and prone angle adjustments can be made without the need to remove the child from the walker. The user can be supported in prone to assist with weight bearing and enable more freedom for the lower limbs.

Swivel seat allows unrestricted gait movement.

The dynamic brakes engage when the child fatigues or sits on the seat. This encourages the child to remain upright as they cannot move the walker while in a seated position.

Multi positional handle bars to ensure the user can grip the frame to support their upper body and feel safe and secure in the product.

Atlas Walker Product Sizing

Size	1		2		3	
	mm	inches	mm	inches	mm	inches
Age	1 - 6		5 - 12		8 - 16	
Handle Bar Height	500-780	19.5-31	700-980	27.5-38.5	800-1250	27.5-38.5
Saddle Height	250-600	10-23.5	450-800	18-31.5	650-900	18-31.5
Chestplate Height	600-950	23.5-37.5	800-1150	31.5-45	900-1350	31.5-45
Frame Width	620	24.5	720	28	72	28
Frame Length	800	31.5	900	35.5	900	35.5
Front Wheel Height	50	2	50	2	50	2
Rear Wheel Height	100	4	100	4	100	4
Saddle Length (interchangeable between size 1 & 2)	210	8	210	8	210	8
Distance Between Pelvic Support and Sacral Support	90-150	3.5-6	140-200	5.5-8	140-200	5.5-8
Max User Weight	30kg	66lbs	45kg	99lbs	60kg	132lbs

Nurmi Neo

The robust, durable easy to use and lightweight **Nurmi Neo** reverse walker for mild to moderate users is extremely manoeuvrable both indoors and outdoors. The product folds easily for transportation and storage.



Otto Bock
QUALITY FOR LIFE



Compact and transportable.

The Nurmi Neo is available in three sizes.

Reverse walker suitable for mild to moderate users. Durable indoor / outdoor base that is compact and transportable and easy to use.

Enhanced safety of roll back wheel lock feature prevents frame from sliding away from the user if pushed backwards.

Multi-positional arm supports provide excellent upper body support and give the user confidence and increased manoeuvrability.

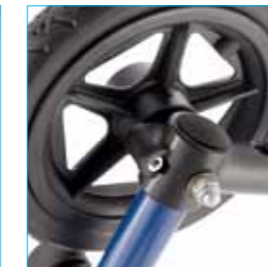
Accessories



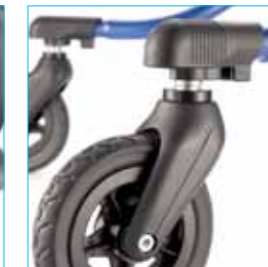
NUR06 Grip bar with universal grips



NUR08 Anti tipper (size 1)
NUR05 Anti tipper (size 2&3)



NUR07 Friction brake



NUR09 Castor swivel lock



NUR10 Gluteal support

Nurmi Neo Product Sizing

Size	1		2		3	
	mm	inches	mm	inches	mm	inches
Age	1 - 4		3 - 7		5 - 10	
Push Handle Height: Grip bar standard	450 - 570	18 - 23	580 - 720	23 - 29	640 - 780	26 - 31
Distance Between Grips: Grip bar standard	410	16	460	18.1	510	20
Distance Forearm Supports: From floor	530 - 640	20.8 - 25.2	660 - 790	26 - 31	710 - 840	30 - 33
Distance Between Forearm Supports: From centre	250 - 410	9.8 - 16	300 - 460	12 - 18	350 - 510	13.7 - 20
Forearm Support Width x Length: From inside	70 x 160	3 - 6.3	70 x 210	3 - 8.2	70 x 210	3 - 8.2
Overall Width	630	24.8	680	26.8	720	28.3
Folding Dimensions LxWxH	650x630x240	25.6x24.8x9.4	760x680x240	30x26.8x9.5	850x720x240	34.5x28.3x9.4
Load Capacity	25kg		40kg		55kg	
Weight	5.5kg		6kg		6.5kg	
Seat Height	300	12	450	17.7	480	19
Turning Diameter: Without accessories	860	33.8	990	39	1060	41.7

Front wheel diameter 150mm, rear wheel diameter 150mm size 1, 200mm size 2 & 3.

Leckey Servicing

Our FREE service and support includes:
Free product training
Free product set up
Free product assessment
Free product re-assessment
Free repair within 2 year warranty

For service policies on all products outside warranty, please contact Leckey's Customer Service department. James Leckey Design Ltd as manufacturer with sole responsibility declares that all products conform to 93/42/EEC guidelines and EN12182 technical aids for disabled persons general requirements and test methods. Order forms and spare parts lists to extend the service life of the product and allow reissue are available on request or online at www.leckey.com.

LECKEY^o

Established in 1983, Leckey is a globally recognised pioneer in the research and development of products that help adults and children with disabilities to go, do, enjoy and participate in everyday activities throughout the day and night.

We take a highly clinical approach to product design and development. Through in-depth clinical research studies with leading universities, and extensive trials with occupational therapists, physiotherapists, users and their families, we continue to develop posturally supportive, family friendly products for all day care, at every stage of life.

Through early intervention, childhood and adulthood Leckey's experienced team of designers, therapists and bioengineers work together to develop products that meet the clinical needs of the healthcare professionals and the social needs of the user.

To achieve this, we work with the healthcare professionals, the individuals and carers who use our products everyday. With their help, we create the dependable, durable, proven and high performance products that we are known for worldwide.



sleepfirm

24 hour postural
care for babies,
kids & adults.
Sleeping, Sitting,
Standing, Walking,
Moving, Bathing,
Toileting.