



Footplate

User Instructions

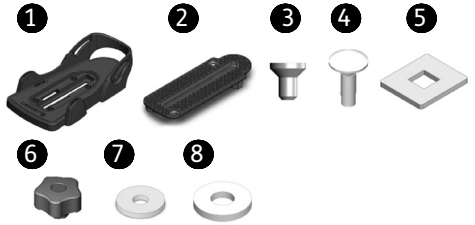


SECTION 01: INSERTING REQUIRED FOOTPLATE ATTACHMENT BOLT

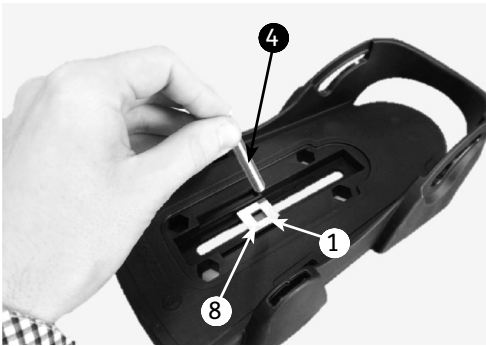
1: INSERTING BOLT INTO SANDAL BASE

Parts Required – ① [1], ④ [1], ⑧ [1] per footplate.

Insert required length of bolt ④. Put the bolt through the retention plate ⑧ and into the sandal ①.



REF	DESCRIPTION	QTY
1	SIZE 3 INJECTION MOULDED SANDAL	2
2	SANDAL RUBBER INSERT	4
3	M5 X 10 CSK SCREW	8
4	M8 X 25 CUP SQUARE BOLT	2
	M8 X 40 CUP SQUARE BOLT	2
	M8 X 45 CUP SQUARE BOLT	2
	M8 X 60 CUP SQUARE BOLT	2
5	CUP SQUARE RETAIN PLATE	2
6	M8 ELESA KNOB	2
7	M8 RUBBER WASHER	2
8	M8 MUDGUARD WASHER	2



2: BOTTOM LID

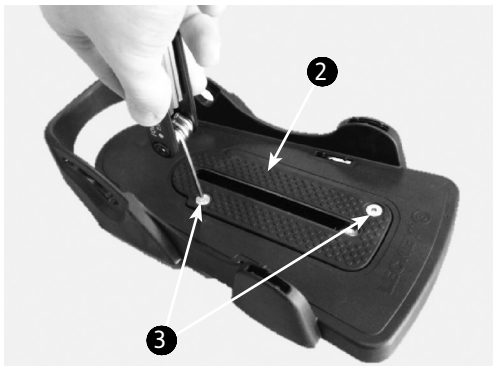
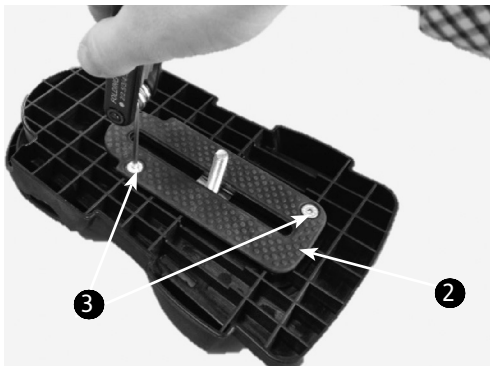
Parts Required – ② [1], ③ [2] per footplate.

Place Rubber Lid ② onto bottom of sandal. Using an Allen key, fasten with countersink screws ③.

3: TOP LID

Parts Required – ② [1], ③ [2] per footplate.

Place second rubber lid ② onto top of sandal. Using an Allen key, fasten with countersink screws ③.



SECTION 02: REPLACING THE FOOTPLATE ATTACHMENT BOLT

1: INSERTING BOLT INTO SANDAL BASE

Parts Required - None.

Using An Allen key, remove countersink screws ③ from rubber lid on the top of the sandal, followed by the removing the screws from the bottom of the sandal.



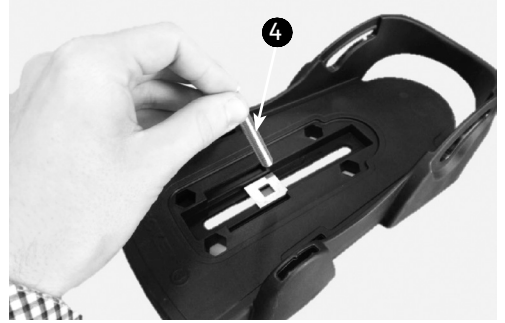
Remove the rubber lid from the top of the sandal to reveal attachment bolt.



2: REMOVE RUBBER LIDS

Parts Required – ④ [1] of desired length, per footplate.

Replace bolt ④ with one of the desired length. Place bolt through the retention plate and slot in the sandal.



Parts Required – Original Screws from step 1.

Using An Allen key, re-screw the countersink screws into the rubber lid on the bottom of the sandal, followed by the re-screwing the screws from the top of the sandal.





Leckey,
19c Ballinderry Road
Lisburn, BT28 2SA
Northern Ireland

[+44] 28 9260 0750
hello@leckey.com

leckey.com



LS151-06