



Leckey BeMe




CE





Name	
Date:	
Email	
Contact Number	
Invoice Address	
Delivery Address	

Quote Order

Purchase Order	
----------------	--



	Item Code	Description	Quantity	Price
Bundle Options				
BeMe Basic		Includes - Seat Core Basic Seat Basic Backrest 1 Piece Footplate Armrests Hip guides Pommel 4 point belt		
BeMe Moderate		Includes - Seat Core Contoured Seat Moderate Backrest Split Footplates Sandals	Flip away lateral brackets Slim Laterals Butterfly Harness Armrests BeMe Headrest	
BeMe Advanced		Includes - Seat Core Split Seat Advanced Backrest Split Footplates Sandals BeMe Headrest	Flip away lateral brackets Slim Laterals Hip guides Butterfly Harness Armrests	
<input type="checkbox"/>	250-1600-B-XX	BeMe Bundle Size 1Basic		XXX
<input type="checkbox"/>	250-1600-M-XX	BeMe Bundle Size 1Moderate		XXX
<input type="checkbox"/>	250-2600-B-XX	BeMe Bundle Size 2 Basic		XXX
<input type="checkbox"/>	250-2600-M-XX	BeMe Bundle Size 2 Moderate		XXX
<input type="checkbox"/>	250-2600-A-XX	BeMe Bundle Size 2 Advanced		XXX
<input type="checkbox"/>	250-3600-B-XX	BeMe Bundle Size 3 Basic		XXX
<input type="checkbox"/>	250-3600-M-XX	BeMe Bundle Size 3 Moderate		XXX
<input type="checkbox"/>	250-3600-A-XX	BeMe Bundle Size 3 Advanced		XXX
<input type="checkbox"/>	250-4600-B-XX	BeMe Bundle Size 4 Basic		XXX
<input type="checkbox"/>	250-4600-M-XX	BeMe Bundle Size 4 Moderate		XXX
<input type="checkbox"/>	250-4600-A-XX	BeMe Bundle Size 4 Advanced		XXX

Colours	
Blue - Replace XX with 02	
Purple - Replace XX with 04	
Red - Replace XX with 09	
Grey - Replace XX with 08	

Chassis



Size 1 Indoor Chassis (Select chassis type and Push handle)

<input type="checkbox"/>	150-1MHT-1	Multi height and tilt Indoor Manual Size 1		XXX
<input type="checkbox"/>	150-1MHT-PWR-1	Multi height and tilt Indoor Electric Size 1		XXX
<input type="checkbox"/>	150-1MHT-PH	Push Handle Size 1		XXX

Size 1 Indoor/Outdoor Chassis (Select chassis type and Push handle)

<input type="checkbox"/>	150-1MHT-1B	Multi height and tilt Indoor-Outdoor Manual Size 1		XXX
<input type="checkbox"/>	150-1MHT-PWR-1B	Multi height and tilt Indoor-Outdoor Electric Size 1		XXX
<input type="checkbox"/>	150-1MHT-PH-1B	Push Handle Size 1 Indoor-Outdoor		XXX

Size 2 Indoor Chassis (Select chassis type and Push handle)

<input type="checkbox"/>	150-2MHT-1	Multi height and tilt Indoor Manual Size 2		XXX
<input type="checkbox"/>	150-2MHT-PWR-1	Multi height and tilt Indoor Electric Size 2		XXX
<input type="checkbox"/>	150-2MHT-PH	Push Handle Size 2		XXX

Size 2 Indoor/Outdoor Chassis (Select chassis type and Push handle)

<input type="checkbox"/>	150-2MHT-1B	Multi height and tilt Indoor-Outdoor Manual Size 2		XXX
<input type="checkbox"/>	150-2MHT-PWR-1B	Multi height and tilt Indoor-Outdoor Electric Size 2		XXX
<input type="checkbox"/>	150-2MHT-PH-1B	Push Handle Size 2 Indoor-Outdoor		XXX

Size 3-4 Indoor Chassis (Select chassis type and Push handle)

<input type="checkbox"/>	150-3MHT-1	Multi height and tilt Indoor Manual Size 3		XXX
<input type="checkbox"/>	150-3MHT-PWR-1	Multi height and tilt Indoor Electric Size 3		XXX
<input type="checkbox"/>	150-3MHT-PH	Push Handle Size 3		XXX

Size 3-4 Indoor/Outdoor Chassis (Select chassis type and Push handle)

<input type="checkbox"/>	150-3MHT-1B	Multi height and tilt Indoor-Outdoor Manual Size 3		XXX
<input type="checkbox"/>	150-3MHT-PWR-1B	Multi height and tilt Indoor-Outdoor Electric Size 3		XXX
<input type="checkbox"/>	150-3MHT-PH-1B	Push Handle Size 3 Indoor-Outdoor		XXX

<input type="checkbox"/>	150-1MHT-1	Multi height and tilt Indoor Manual Size 1		XXX
<input type="checkbox"/>	150-1MHT-1B	Multi height and tilt Indoor-Outdoor Manual Size 1		XXX
<input type="checkbox"/>	150-1MHT-PWR-1	Multi height and tilt Indoor Electric Size 1		XXX
<input type="checkbox"/>	150-1MHT-PWR-1B	Multi height and tilt Indoor-Outdoor Electric Size 1		XXX

Power leads (Select correct lead if ordering any Electric chassis)

<input type="checkbox"/>	250-MHT-EUR	Adapter for EU plug		XXX
<input type="checkbox"/>	250-MHT-USA	Adapter for USA plug		XXX
<input type="checkbox"/>	250-MHT-AUS	Adapter for AUS plug		XXX
<input type="checkbox"/>	250-MHT-UK	Adapter for UK plug		XXX

Interfaces



<input type="checkbox"/>	150-1760	Interface for Size 1 BeMe on to Zippie Iris, Quickie Iris, Quickie SR45		XXX
<input type="checkbox"/>	150-1771	Interface for Size 1 BeMe on to Q300 M -std		XXX
<input type="checkbox"/>	150-1772	Interface for Size 1 BeMe on to Q300 M - lift & tilt		XXX
<input type="checkbox"/>	150-2760	Interface for Size 2 BeMe on to Zippie Iris, Quickie Iris, Quickie SR45		XXX
<input type="checkbox"/>	150-2771	Interface for Size 2 BeMe on to Q300 M - std		XXX
<input type="checkbox"/>	150-2772	Interface for Size 2 BeMe on to Q300 M - lift & tilt		XXX
<input type="checkbox"/>	150-3760	Interface for Size 3-4 BeMe on to Zippie Iris, Quickie Iris or Quickie SR45		XXX
<input type="checkbox"/>	150-3771	Interface for Size 3-4 BeMe on to Q300 M -std		XXX
<input type="checkbox"/>	150-3772	Interface for Size 3-4 BeMe on to Q300 M - lift & tilt		XXX
<input type="checkbox"/>	150-773	User control mount bracket		XXX

Chest Harness



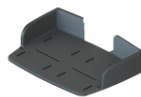
<input type="checkbox"/>	155-N001-L600	Small Dynamic Butterfly Harness		XXX
<input type="checkbox"/>	155-N001-L601	Medium Dynamic Butterfly Harness		XXX
<input type="checkbox"/>	155-N001-L602	Large Dynamic Butterfly Harness		XXX
<input type="checkbox"/>	155-N001-L603	Extra Large Dynamic Butterfly Harness		XXX

Tray (match Seat core size)





<input type="checkbox"/>	150-1720	Size 1 Tray		XXX
<input type="checkbox"/>	150-1888	Size 1 Padded Tray Cover		XXX
<input type="checkbox"/>	150-1671	Tray Elbow Blockers for Size 1		XXX
<input type="checkbox"/>	150-2720	Size 2 Tray		XXX
<input type="checkbox"/>	150-2888	Size 2 Padded Tray Cover		XXX
<input type="checkbox"/>	117-641	Tray Elbow Blockers for Size 2		XXX
<input type="checkbox"/>	150-3720	Size 3 Tray		XXX
<input type="checkbox"/>	150-3888	Size 3 Padded Tray Cover		XXX
<input type="checkbox"/>	150-3671	Tray Elbow Blockers for Size 3		XXX
<input type="checkbox"/>	150-4720	Size 4 Tray (Use Size 3 cover & Elbow Blockers if required)		XXX

Leg Support



<input type="checkbox"/>	150-1872	Cushion for One-Piece Footplate - Size 1		XXX
<input type="checkbox"/>	150-2872	Cushion for One-Piece Footplate - Size 2		XXX
<input type="checkbox"/>	150-3872	Cushion for One-Piece Footplate - Size 3/4		XXX

Foot Support				
				
<input type="checkbox"/>	AH01	Ankle Huggers		XXX
<input type="checkbox"/>	150-1852	Extra Small Booties		XXX
<input type="checkbox"/>	150-2852	Small Booties		XXX
<input type="checkbox"/>	152-1600	Sandals Small		XXX
<input type="checkbox"/>	152-2600	Sandals Medium		XXX
<input type="checkbox"/>	152-3600	Sandals Large		XXX
<input type="checkbox"/>	173-2305	Small Ankle Wraps (Only with Sandals)		XXX
<input type="checkbox"/>	173-3305	Large Ankle Wraps (Only with Sandals)		XXX
Headrests				
				
<input type="checkbox"/>	150-675	BeMe Headrest		XXX
<input type="checkbox"/>	150-780	Universal Headrest Bracket (Whitmyer PRO or Leckey Headrests)		XXX
Upholstery				
		Blue - Replace XX with 02		
		Purple - Replace XX with 04		
		Red - Replace XX with 09		
		Grey - Replace XX with 08		
		Incon - Replace XX with 10		
<input type="checkbox"/>	150-855-XX	BeMe Headrest Cushion and Cover		XXX
Miscellaneous				
<input type="checkbox"/>	150-1745	Communication mount		XXX
<input type="checkbox"/>	150-1790	Spacer Pair to decrease minimum seat depth on BeMe Small - 25mm		XXX
<input type="checkbox"/>	150-1791	Spacer Pair to decrease minimum seat depth on BeMe Small - 50mm		XXX

Technical Information

	Size 1	Size 2	Size 3	Size 4
Seat Depth (mm) *	120-270	225-350	320-430	400-540
Seat Width Maximum (No Hip Guides) (mm)	280	325	410	475
Femoral Width on Split Seat (mm)		90-125	110-160	135-170
Maximum Weight Limit (kg) **	35	50	70	80

	Size 1	Size 2	Size 3	Size 4
Back Height (mm)	300-400	350-470	400-530	475-650
Standard Hip Guide Width (mm)	145-215	175-260	245-350	290-405
Slim Hip Guide Width (mm)	170-240	200-285	270-375	315-430
Lateral Width (mm)	130-230	200-300	225-350	350-450
Inset Lateral Width (mm)	80-180	150-250	175-300	300-400
Backrest Angle (degrees)			+10 to -25	
Maximum Weight Limit (kg) **	35	50	70	80